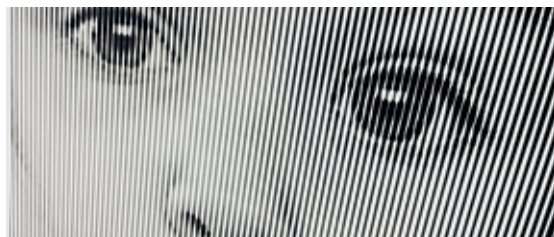


# Decorative panels



# Decustik decorative panels



**Since 1982 have been manufacturing decorative and acoustic panels for architectural indoor projects.**

Decustik designs and manufactures decorative and acoustic panels for walls, ceilings and furniture for auditoriums, theatres, restaurants, hotels, and all kind of interior projects with special technical and design requirements.

We collaborate with architects and interior designers until we achieve the best results for your projects. We strive to continuously develop our technical capabilities and we are proud of contributing to your projects with the experience and precision of our excellent team of collaborators.

We hope that this catalog inspires you in your future projects.

The mecakim / decustik team



## Decorative 3D

page 04



## Customized CNC

page 18



## Degrafik images

page 22



## Slatted walls 3D

page 26



## Curved dukta

page 30



## Technical information

page 34

The background of the entire page is a close-up photograph of decorative 3D machined wood panels. The panels have a repeating wavy, undulating pattern that creates a sense of depth and texture. The lighting is soft, highlighting the ridges and shadows of the waves. A vertical line runs down the center of the image, and a horizontal line runs across the top, creating a grid-like structure. The overall color palette is neutral, with various shades of gray and white.

## Decorative 3D

### Machined decorative panels

Three dimensional machined wood panels, with a wide choice of options and the possibility of adapting the designs to the dimensions of each surface.





Decustik decorative 3D | model PD033 DESERT | lacquered white RAL 9003



Decustik decorative 3D | model PD042 VIMET LINE |



Decustik decorative 3D | model PD045 TRAMA XL | lacquered white RAL 9003





lacquered white RAL 9003



Decustik decorative 3D | model PD015 SQUARE | lacquered cream NCS S 1005-Y50R



Decustik decorative 3D | model PD032 PUNXA X2 | lacquered white RAL 9003



Decustik decorative 3D | model PD007 DUNA | lacquered metallized aluminum RAL 9006

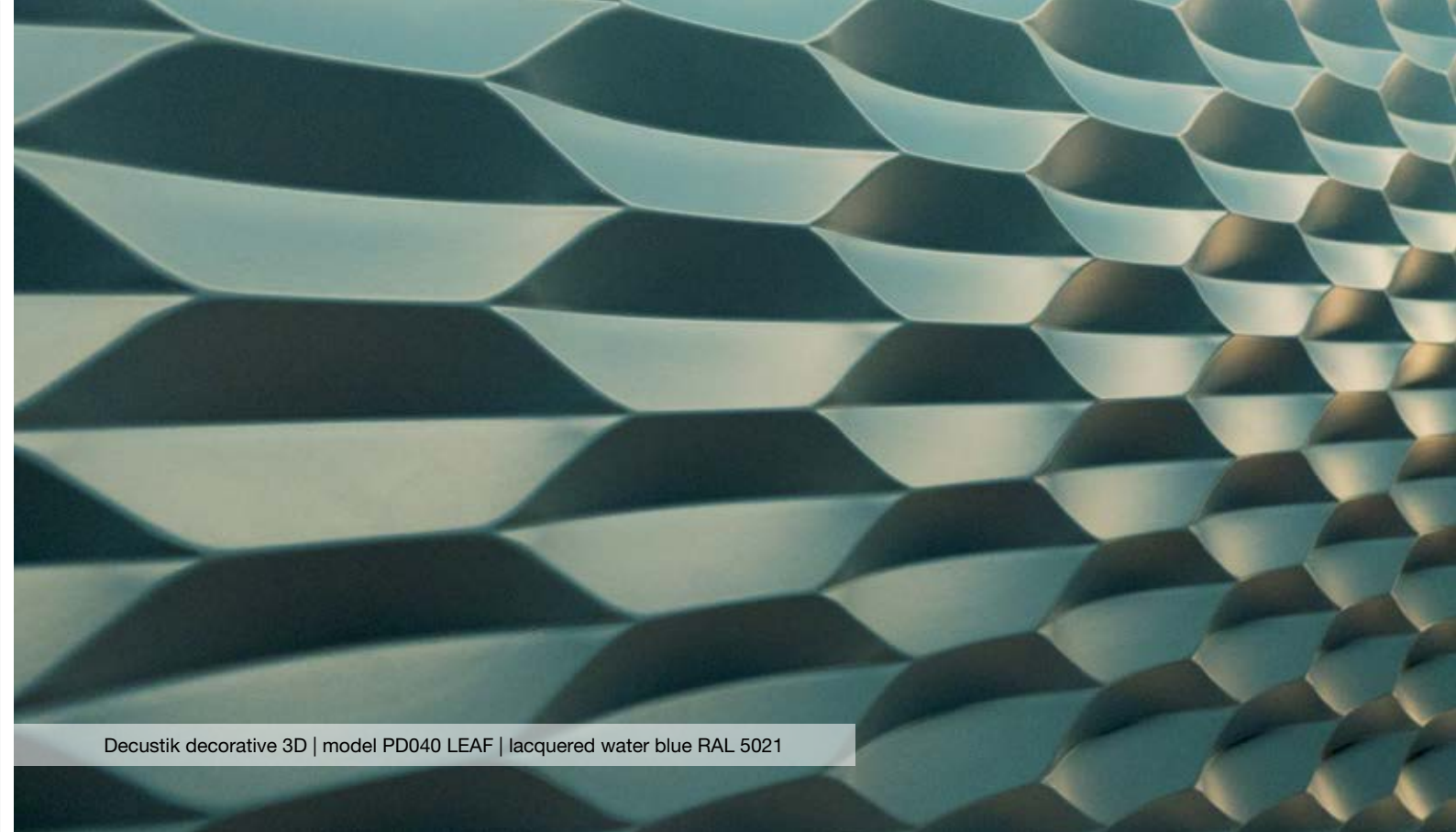




Decustik decorative 3D | model PD030 SOFT X2 | lacquered white RAL



Decustik decorative 3D | Model PD006 FLUID | lacquered white RAL 9003



Decustik decorative 3D | model PD040 LEAF | lacquered water blue RAL 5021



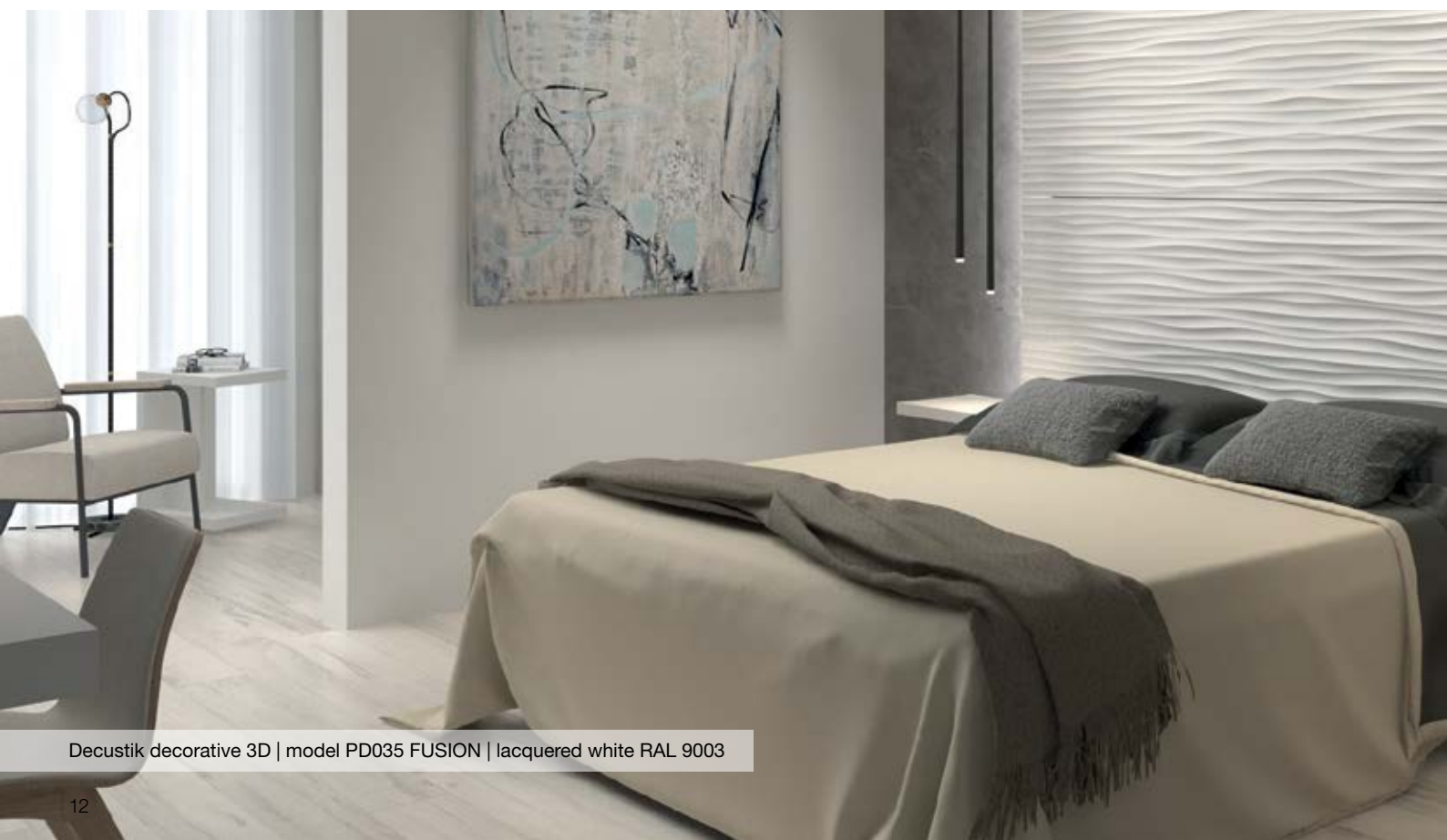
Decustik decorative 3D | Model PD006 FLUID | lacquered white RAL 9003



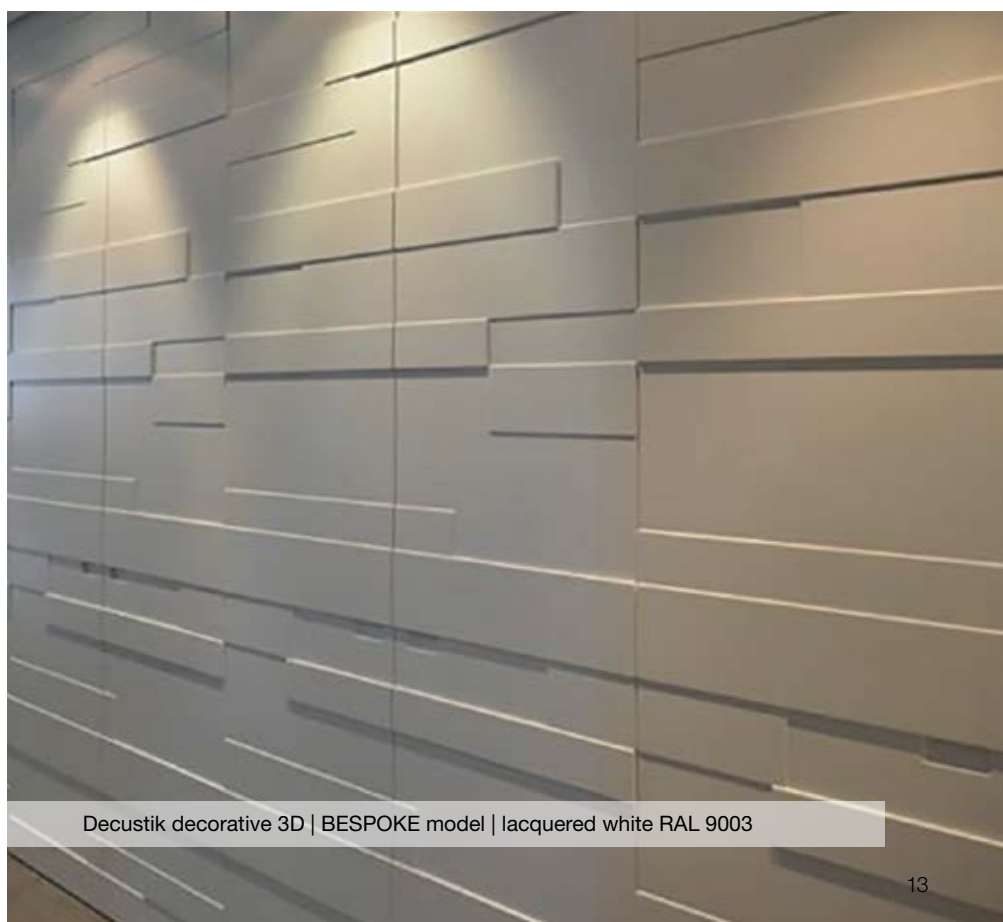
Decustik decorative 3D | model PD029 SOLC X2 | lacquered white RAL 9003



Decustik decorative 3D | model PD044 BALTIC XL |



Decustik decorative 3D | model PD035 FUSION | lacquered white RAL 9003





Decustik decorative 3D | model PD029 SOLC X2 and PD020 BOWTIE | birch plywood varnished natural



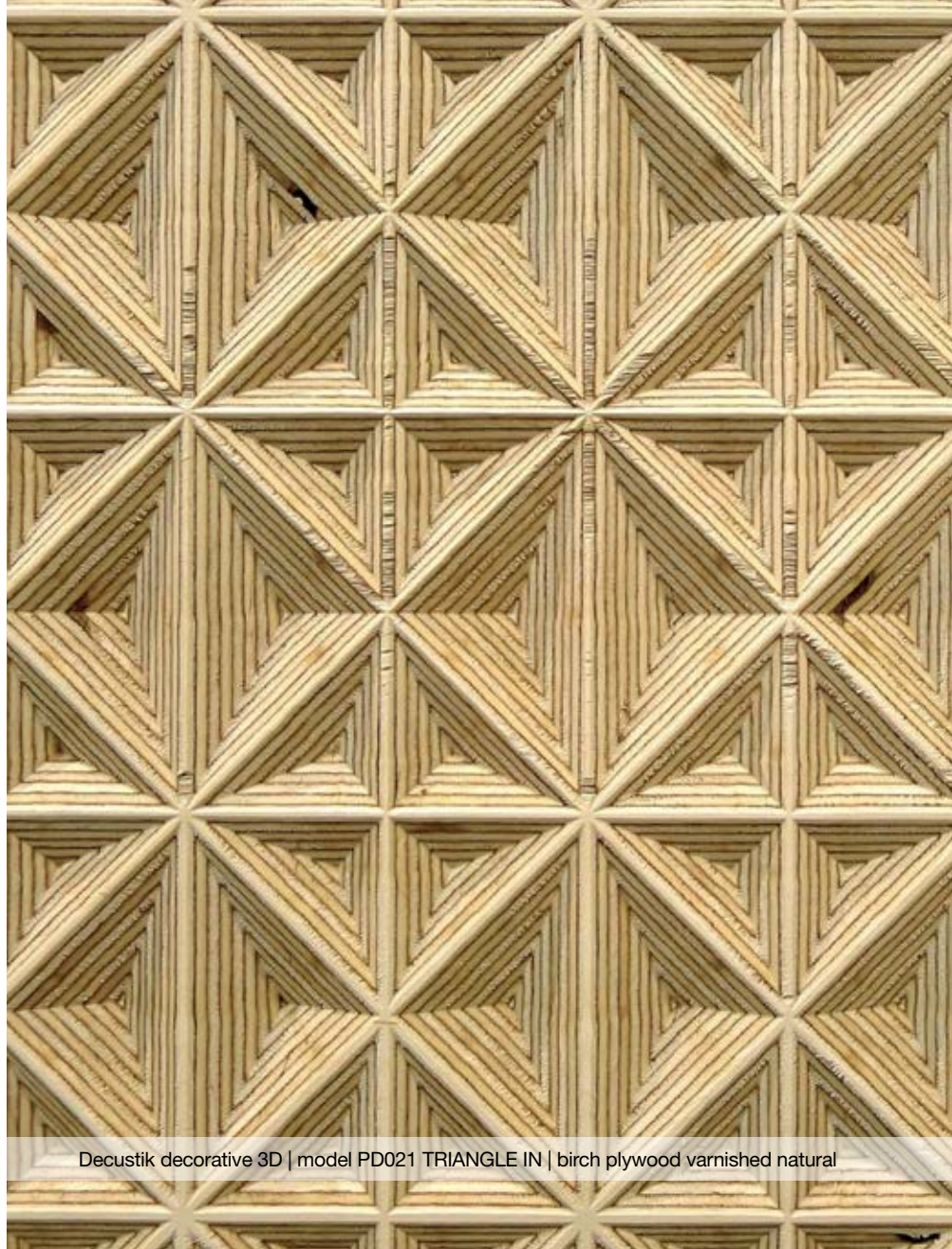
Decustik decorative 3D | model PD022 CURVED LINE



Decustik decorative 3D | model PD029 SOLC X2 | birch plywood varnished natural



| birch plywood varnished natural



Decustik decorative 3D | model PD021 TRIANGLE IN | birch plywood varnished natural



Decustik decorative 3D | model PD020 BOWTIE | birch plywood varnished natural



Decustik decorative 3D | model PD031 ROC X2 | lacquered white RAL 9003



Decustik decorative 3D | model PD008 SOLC | lacquered NCS S 6005-R80B gloss



Decustik decorative 3D | model PD002 CANYA |



Decustik decorative 3D | model PD028 LEDA and PD018 ROC |  
lacquered white RAL 9003 gloss and red NCS S 1080-R gloss



lacquered white RAL 9003

## Customized CNC

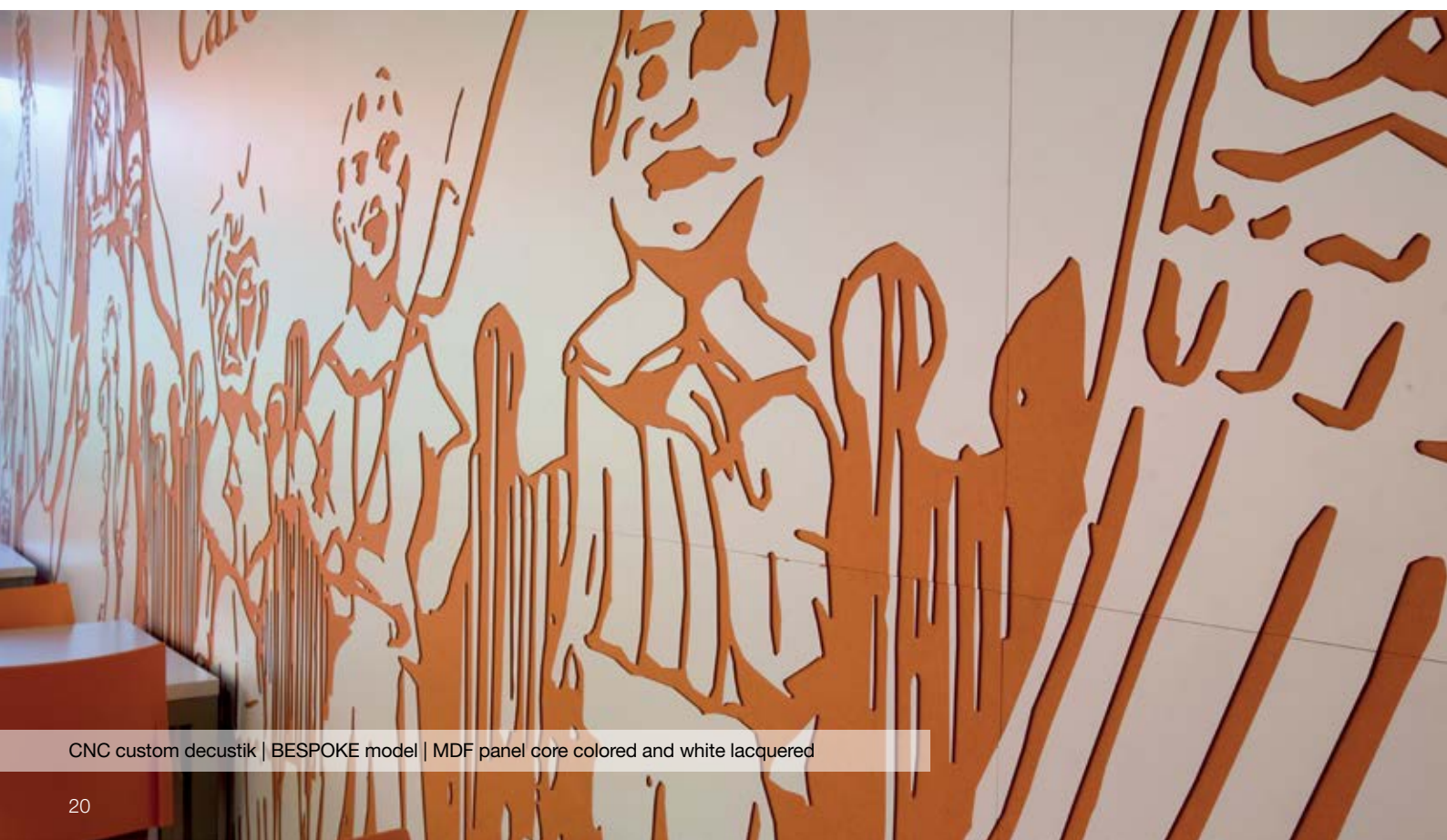
### Customized decorative panels

By means of exclusive milling techniques and using different materials we can achieve singular results for any project.





CNC custom decustik | BESPOKE model | fiber cement panel for outdoor use



CNC custom decustik | BESPOKE model | MDF panel core colored and white lacquered



CNC custom decustik | BESPOKE model | fiber cement panel for outdoor use




CNC custom decustik | BESPOKE model | black varnished MDF panel

## Degrafik images

Large dimension images made by means of machined lines with variable width and depth on different types of panels, both for interior and exterior use.



# TICA OPTICONTROL

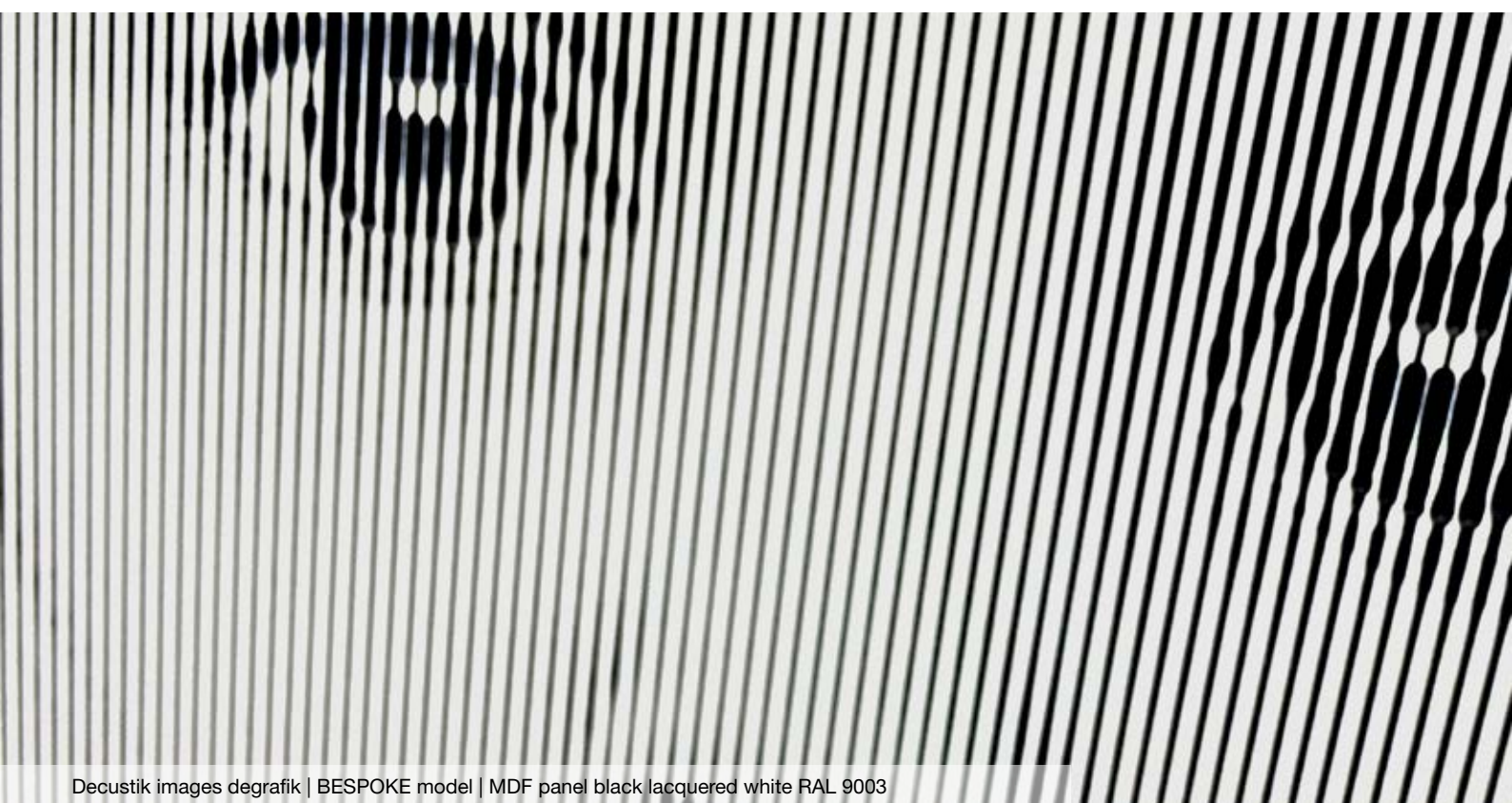
 Carretera  
BLANC

10





Decustik images degrafik | BESPOKE model | fiber cement panel for outdoor use



Decustik images degrafik | BESPOKE model | MDF panel black lacquered white RAL 9003



Decustik images degrafik | BESPOKE model | MDF panel black lacquered white RAL 9003

## Slatted walls 3D

### Slatted panels in three dimensions

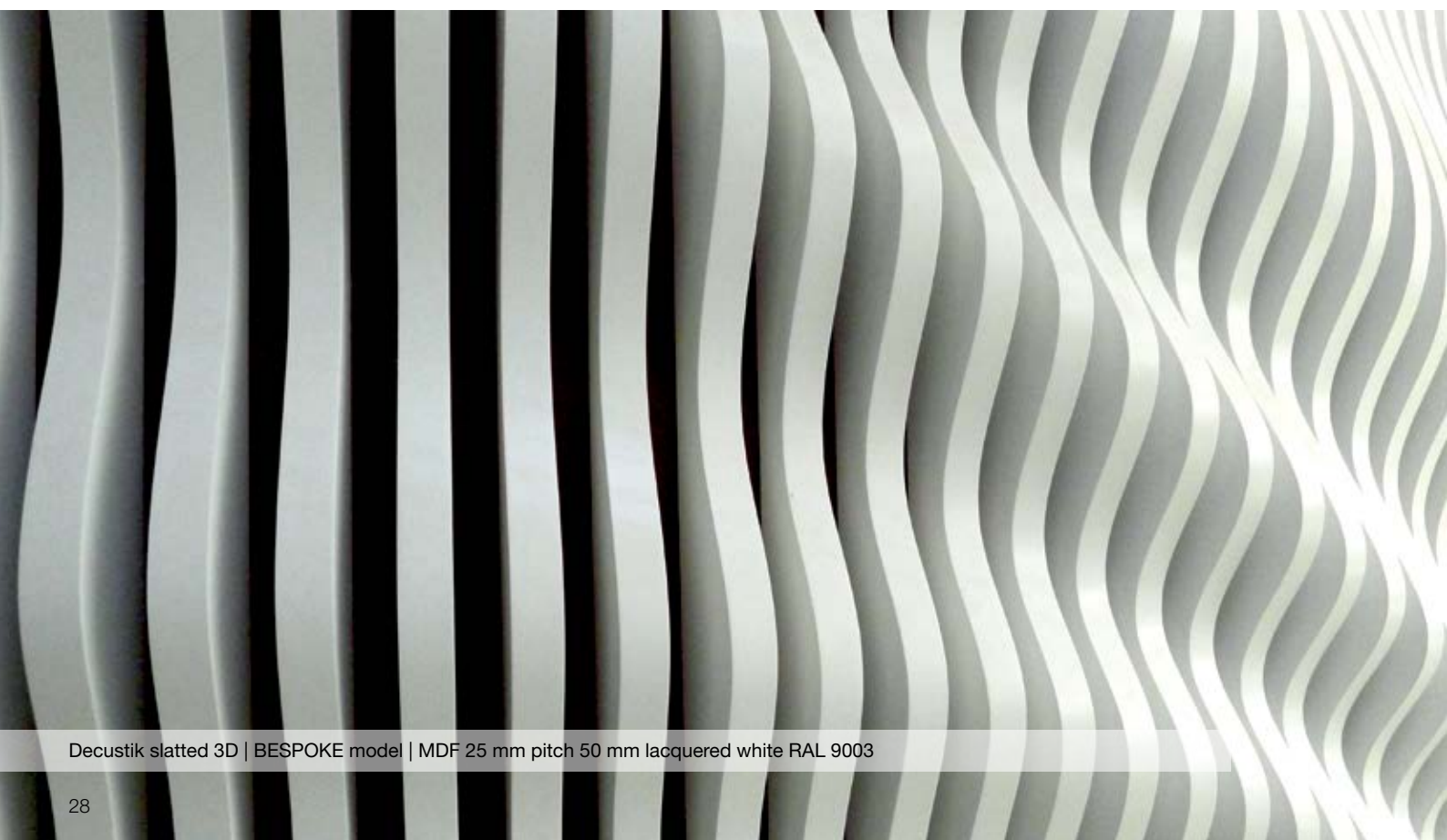
Wooden slatted surfaces, for walls and ceilings, that incorporate sinuous forms and volumes in three dimensions. Parametric designs completely customizable in shapes and materials.



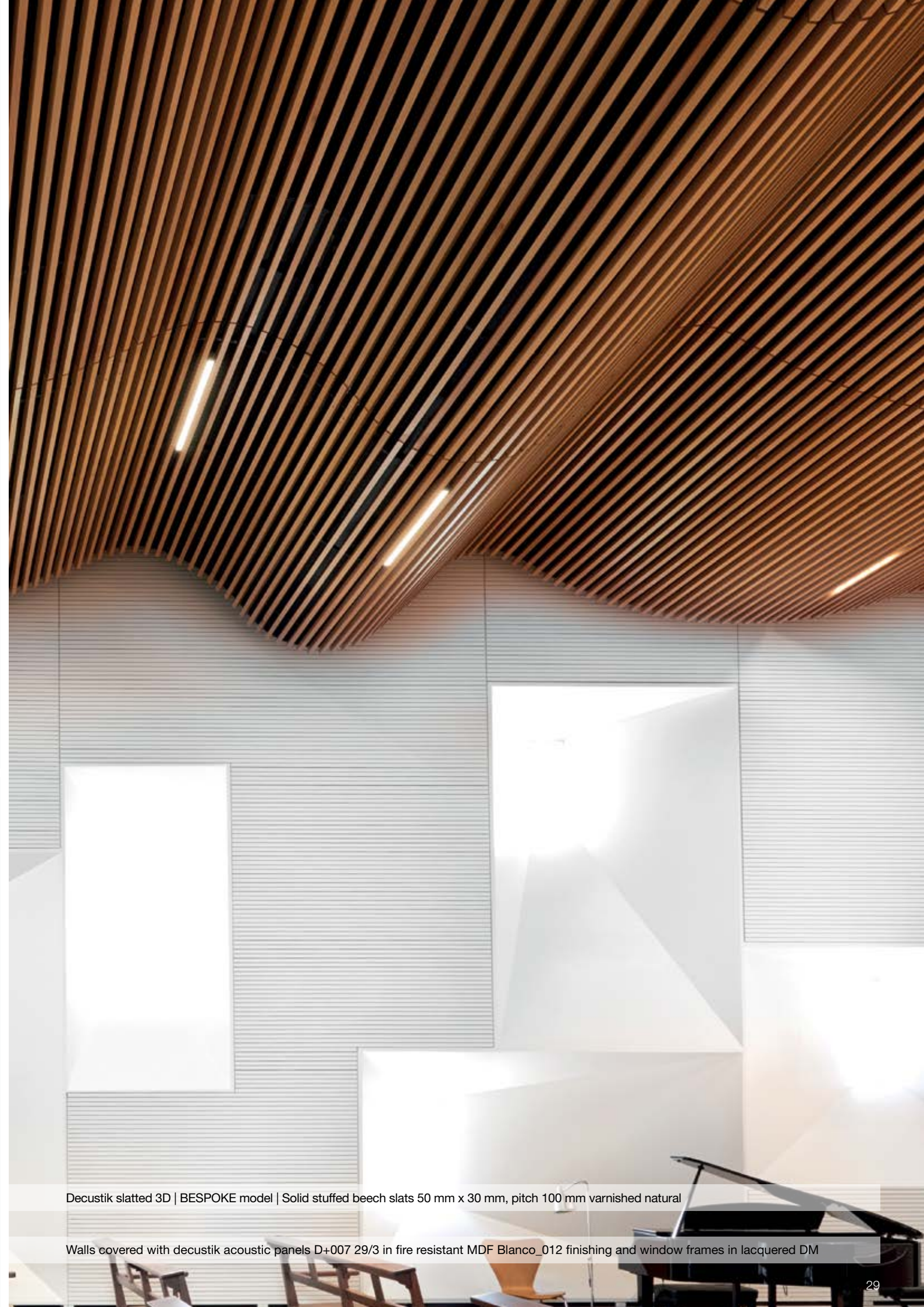




Decustik slatted 3D | BESPOKE model | Plywood Spruce 40 mm pitch 80 mm varnished natural



Decustik slatted 3D | BESPOKE model | MDF 25 mm pitch 50 mm lacquered white RAL 9003



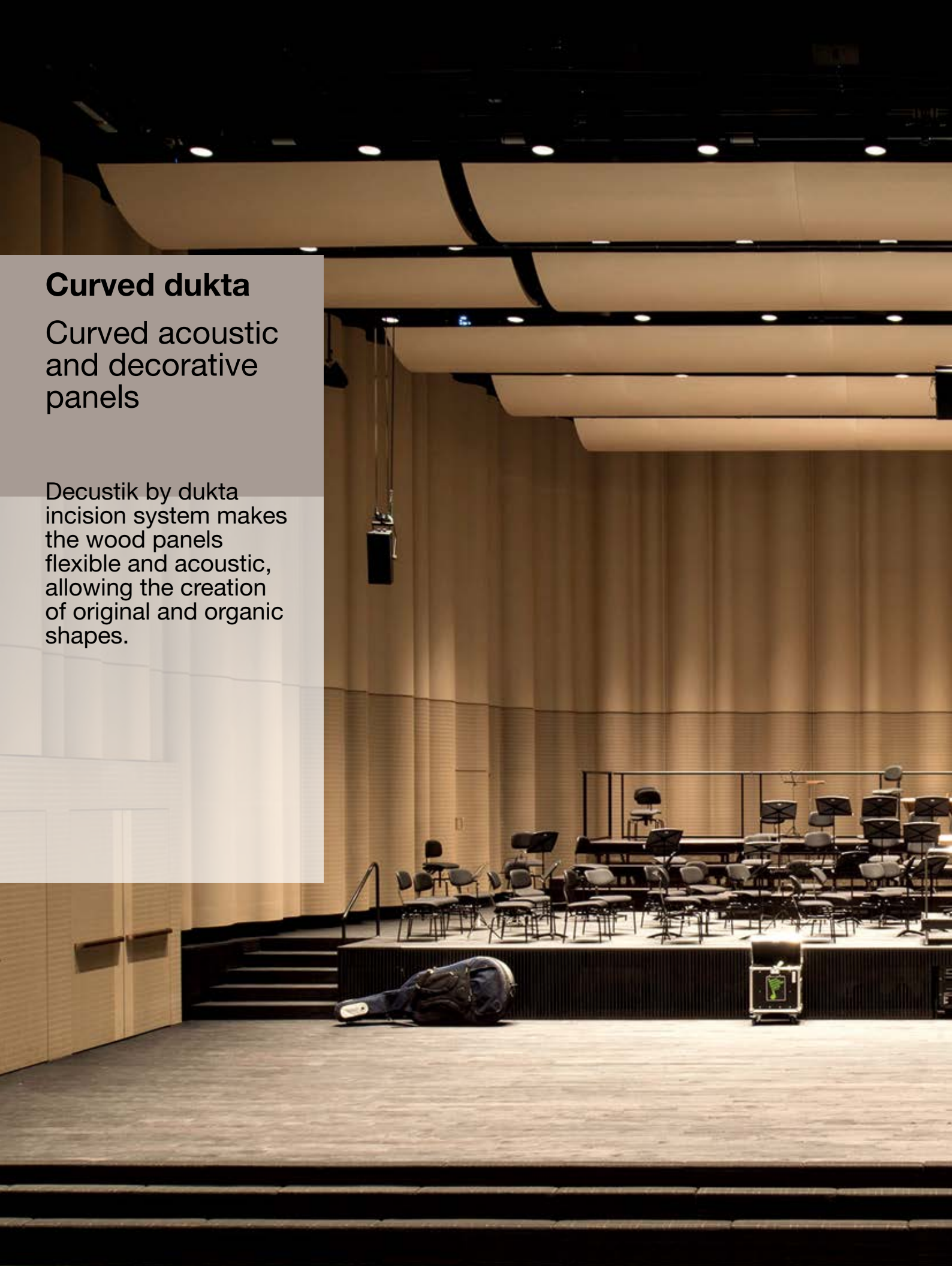
Decustik slatted 3D | BESPOKE model | Solid stuffed beech slats 50 mm x 30 mm, pitch 100 mm varnished natural

Walls covered with decustik acoustic panels D+007 29/3 in fire resistant MDF Blanco\_012 finishing and window frames in lacquered DM

## Curved dukta

### Curved acoustic and decorative panels

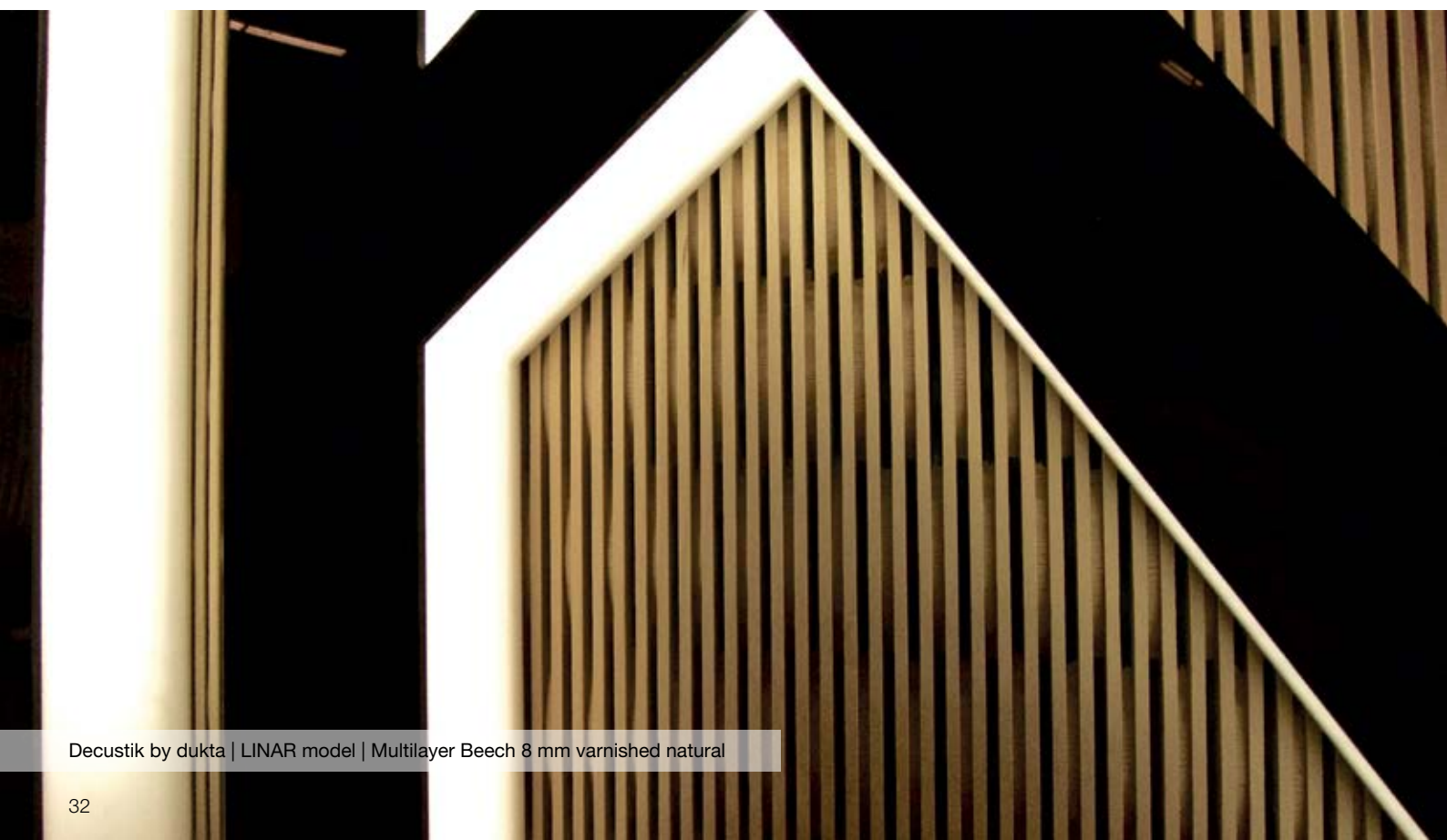
Decustik by dukta incision system makes the wood panels flexible and acoustic, allowing the creation of original and organic shapes.







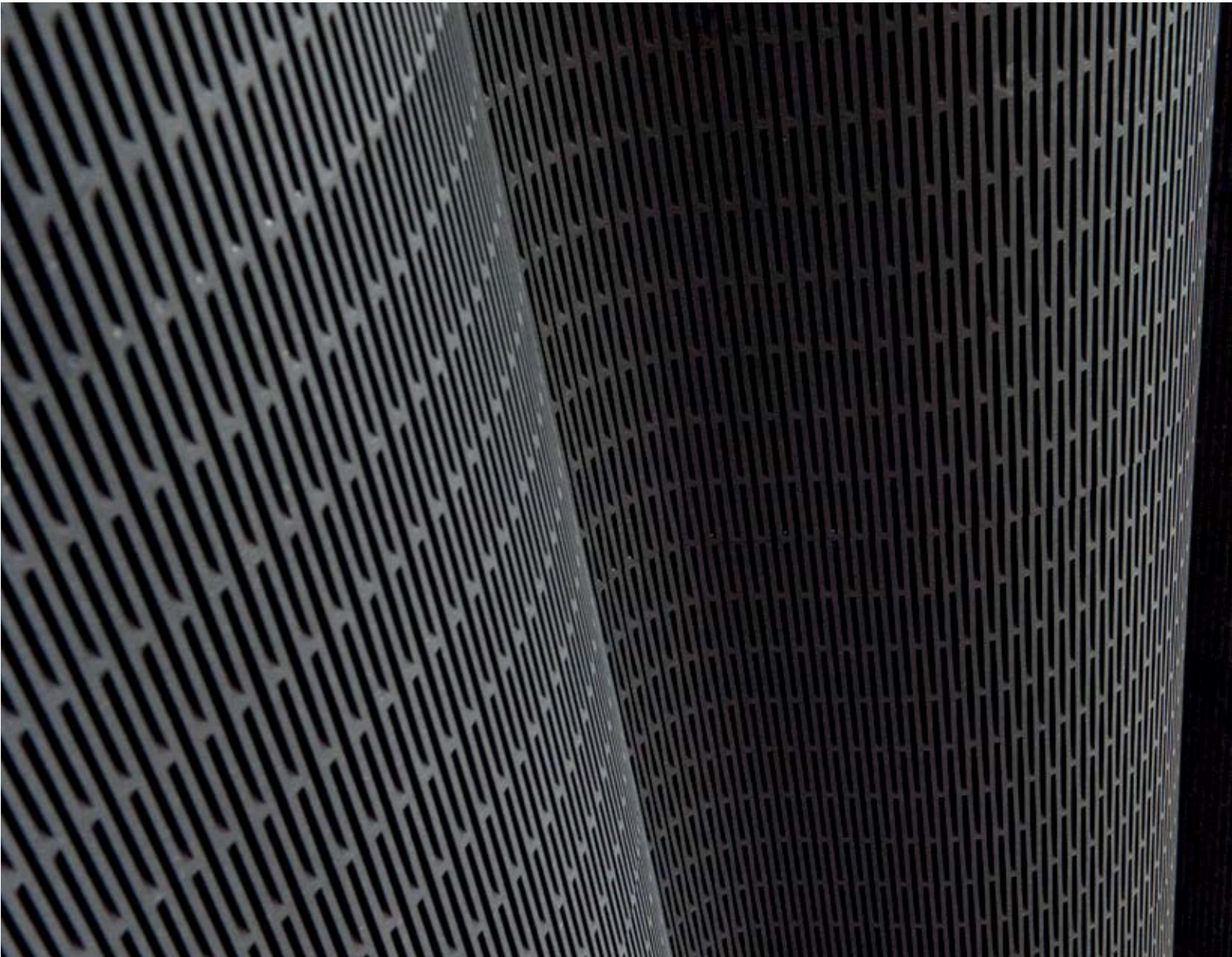
Decustik by dukta | LINAR model | Multilayer Beech 8 mm varnished natural



Decustik by dukta | LINAR model | Multilayer Beech 8 mm varnished natural



Decustik by dukta | LINAR model | MDF 8 mm varnished natural



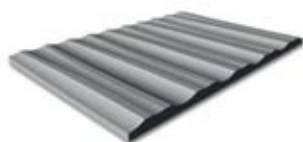
Decustik by dukta | SONAR model| black core MDF 8 mm with no finish

## Decorative 3D

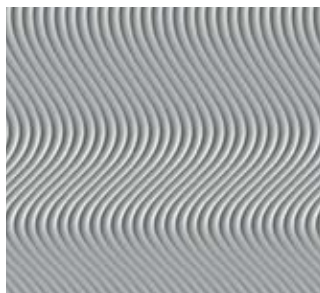
**Materials and dimensions:** Decustik decorative panels are manufactured in standard dimensions (generally multiples of 600 mm) and also bespoke manufactured to easily fit measurements of every wall. Panels are manufactured using MDF wood fiber boards with lacquered finish. Our designs can be manufactured with a continuous pattern, identifying every panel with a code for an easy set up.



**Thicknesses:**  
19 and 22 mm



**PD045-TRAMA XL**



**Thicknesses:**  
19 and 22 mm



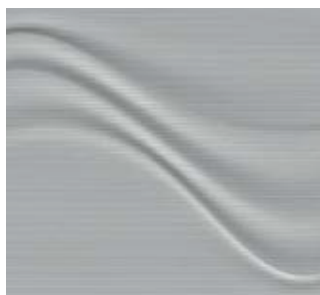
**PD033-DESERT**



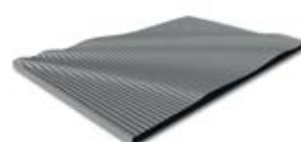
**Thicknesses:**  
22 mm



**PD035-FUSION**



**Thicknesses:**  
22 mm



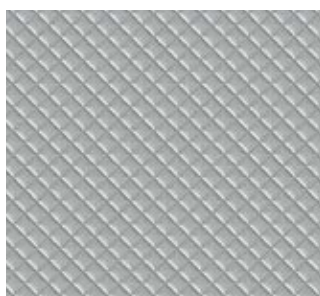
**PD006-FLUID**



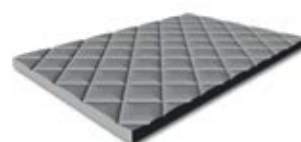
**Thicknesses:**  
19 and 22 mm



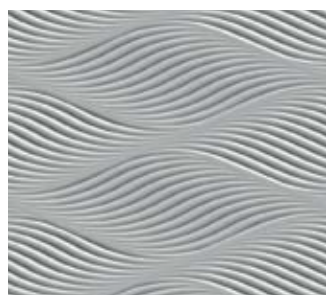
**PD044-BALTIC XL**



**Thicknesses:**  
12 and 22 mm



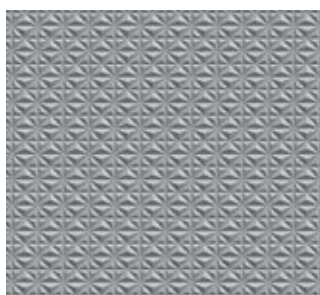
**PD015-SQUARE**



**Thicknesses:**  
19 and 22 mm



**PD030-SOFTX2**

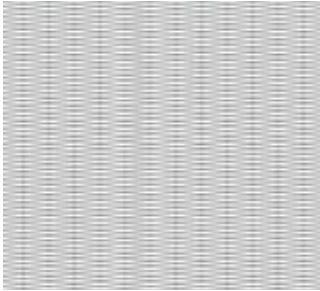


**Thicknesses:**  
22 mm



**PD021-TRIANGLE IN**

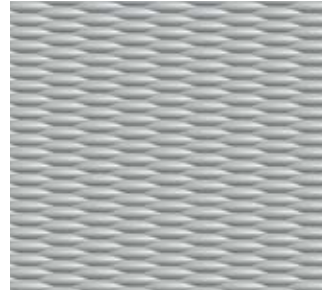
More designs at [www.decustik.com](http://www.decustik.com)



**Thicknesses:**  
16 and 22 mm



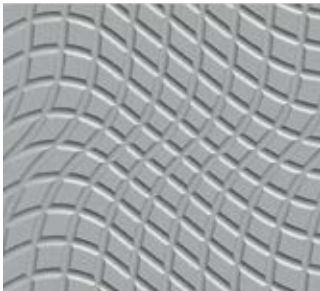
**PD042-VIMET LINE**



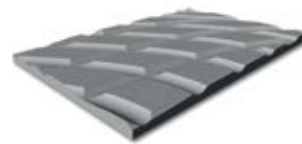
**Thicknesses:**  
19 and 22 mm



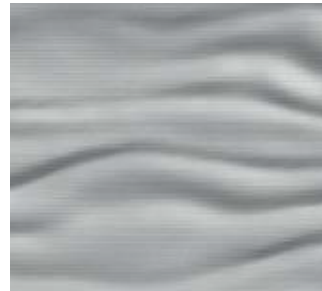
**PD040-LEAF**



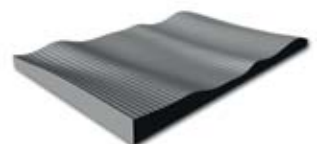
**Thicknesses:**  
19 and 22 mm



**PD032-PUNXAX2**

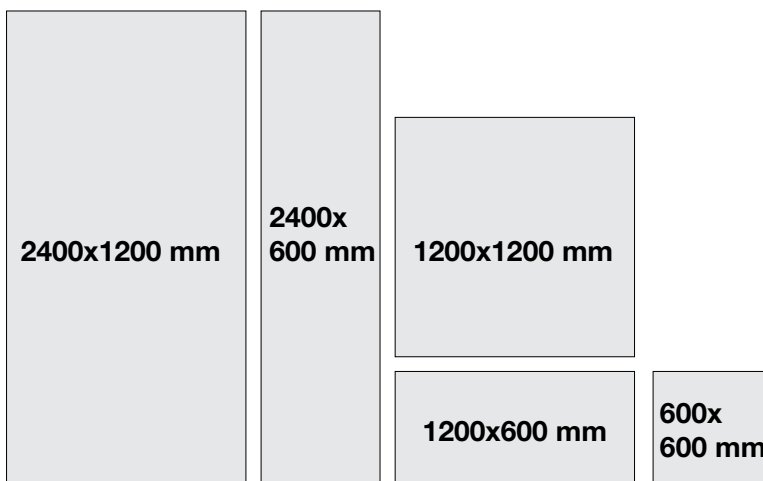


**Thicknesses:**  
45 mm



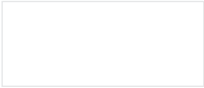
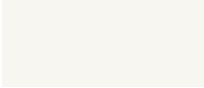



**PD027-ATLAS**

**Standard dimensions:** Standard panels measure 2400x1200 mm, 2400x600 mm, 1200x1200 mm, 1200x600 mm and 600x600 mm with designs in vertical or horizontal options. Thickness of panels changes according to every design. Other dimensions are possible depending on suppliers' availability.





**Surface finishes:** When requested, our panels are delivered perfectly finished and ready for installation. Complete range of RAL and NCS chart is available. We can supply also with pre-finished white primer, ready to apply the final lacquer or paint on site after the panels have been installed.

#### Warm grays

				
<b>RAL 9010</b> Pure white	<b>NCS</b> S 0300-N	<b>NCS</b> S 2002-Y	<b>NCS</b> S 5006-Y20R	<b>NCS</b> S 7500-N



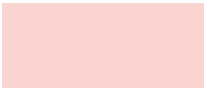

#### Cold grays

				
<b>RAL 9003</b> Signal white	<b>NCS</b> S 1000-N	<b>NCS</b> 2005 R80B	<b>RAL 9006</b> Aluminium	<b>RAL 9005</b> Jet black





#### Yellows

			
<b>NCS</b> S 0585-Y40R	<b>NCS</b> S 0580-Y20R	<b>RAL 1003</b> Signal yellow	<b>RAL 1015</b> Light ivory





#### Reds

			
<b>NCS</b> S 2570-R	<b>NCS</b> S 1080-R	<b>NCS</b> S 0515-R	<b>NCS</b> S 3055-R40B

#### Greens

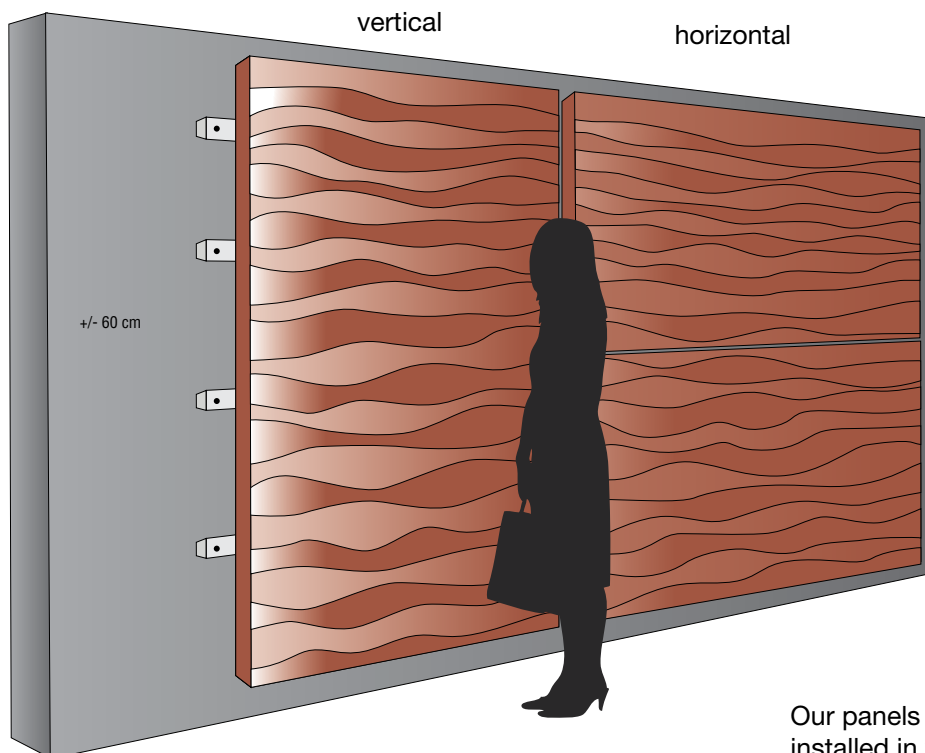
			
<b>RAL 7032</b> Pebble grey	<b>NCS</b> S 1060-G90Y	<b>NCS</b> S 3050-G90Y	<b>NCS</b> S 6005-G20Y

#### Blues

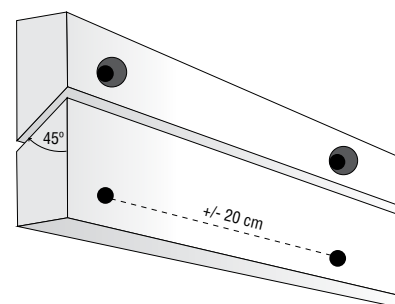
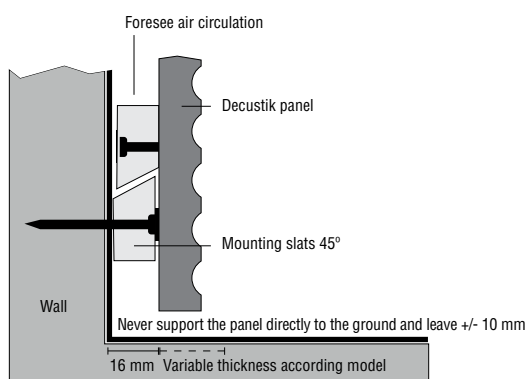
			
<b>RAL 5021</b> Water blue	<b>NCS</b> S 3020-B50G	<b>NCS</b> S 4040B	<b>NCS</b> S 1040-R90B

**Storage and handling:** As panels are usually delivered completely finished and ready for installation, they must be handled with care. It is also mandatory to acclimate the panels to the final temperature and humidity conditions of the room at least 48 hours prior to installation.

**Installation on walls:** We recommend to use our installation battens, placed every 600 mm approximately. To avoid humidity issues, the panels should never be installed in contact with the floor, leaving +/- 10 mm. We also recommend to leave gaps between battens to facilitate air circulation behind panels.



Our panels can be manufactured to be installed in vertical or horizontal position.



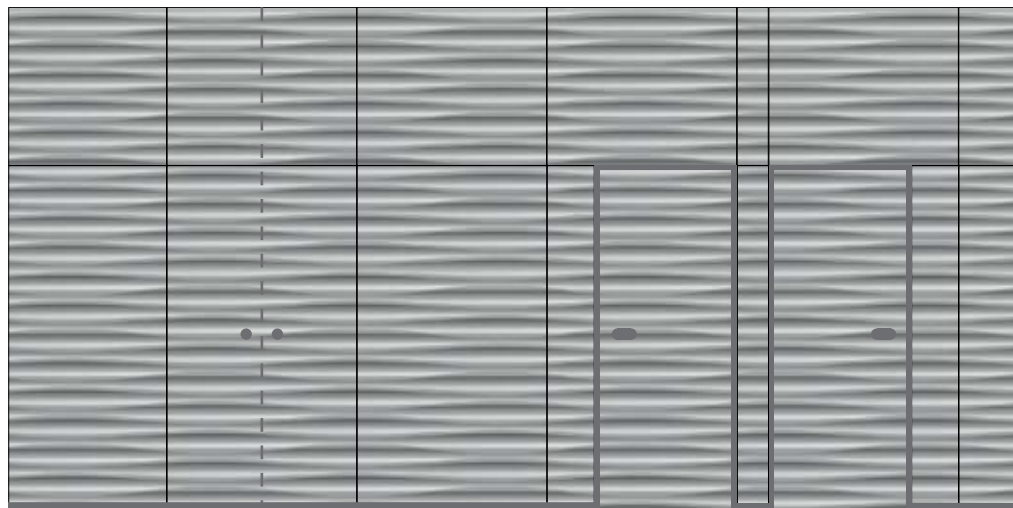
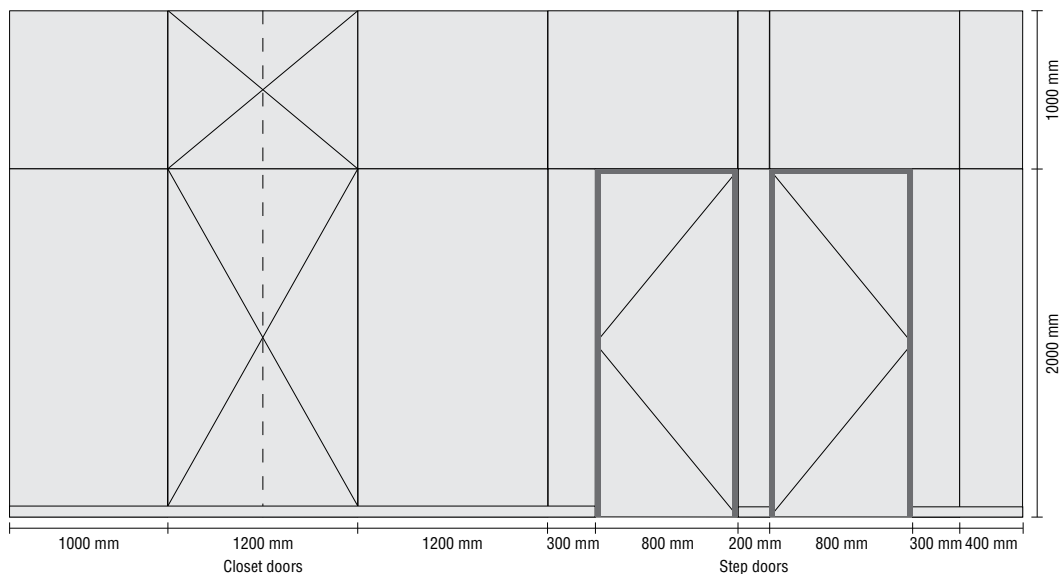
Mounting slats measuring 2400 mm long and 16 mm thick are available.

# Customized CNC

When manufacturing our customized CNC panels we generally use MDF boards of different thicknesses, according to specifications required in each model. Dimensions are limited to available materials (usually 2400x1200 mm) or dimensions of our machines (generally 3000x1500 mm). For a maximum use of the materials we recommend to adapt the layout of panels to 2400x1200 mm, 2400x600 mm, 1200x1200 mm, 1200x600 mm or 600x600 mm. You must send us your designs in .dwg, .dxf, .ai or other vectorial file formats, along with a drawing displaying your proposed layout. We will review your proposals and prepare a drawing with a simulation of each wall for approval. The panels are supplied numbered to facilitate set up.



## Modulation example of the decorative panel



The panels are manufactured numbered and ready for set up.

# Degrafik images

The Degrafik system allows you to reproduce an image by machining lines of different widths and depths. Degrafik panels are usually manufactured using black colored MDF wood fiber boards with a white laminated or lacquered surface or with a large range of melamine and lacquered finishes.

**Dimensions:** Panel sizes are limited to those of the materials, usually 2400x1200 mm and those of the machinery (usually 3000x1500 mm). The more common thickness of the panels is 16 mm, installed using a structure made of slats 16 mm thick, thus the total thickness of the assembled set is approximately 32 mm. Being a product manufactured on request, panels can also be manufactured with other thicknesses available in the market.

**Installation:** We recommend assembly using tongue and groove between panels, but we can adapt our panels to any other anchoring systems you may require in your project.

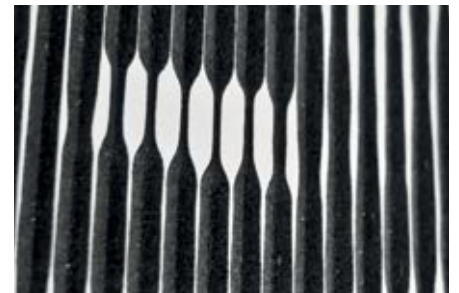
**Image formats accepted:** You may supply high quality images, with a high contrast, black and white images if possible, in any of the usual graphic formats (jpg, tiff, ...)



**High Definition.** Slot pitch between 3.5 and 1.5 mm. To be visualized at distances lower than 2 m.



**Medium Definition.** Slot pitch between 7 and 4 mm. To be visualized at distance between 2 and 4 m.



**Low Definition.** Slot pitch between 12 and 8 mm. To be visualized at distance greater than 4 m.



## Curved dukta

Decustik by dukta decorative panels are conceived to be installed over a curved structure, usually made of wood. Several solutions and anchoring clips are available to facilitate assembly of panels. For thicker panels like JANUS model (between 25 and 27 mm), we recommend to use a specific metal comb. For thinner models, with thicknesses between 8 and 10 mm, we recommend to assemble directly over the curved structure with gun nails and glue. Dukta panels are supplied with over-measure and must be cut directly at site. To finish the panels we recommend to apply once installed finishing oils, lasur or paints. We do not recommend finishing before assembly, as cured varnishes and lacquers can break when bent. For a greater acoustic absorption we recommend to install mineral wool behind the panels, covered with a black acoustic veil stapled to the structure.



### JANUS

#### Usable area:

2300x950 mm

#### Gross panel size:

2500x1020 mm

#### Minimum radius approx:

≥ 100 mm

#### Mat. and thicknesses:

Spruce 27 mm, 7 kg/m<sup>2</sup>

Raw MDF 25 mm,

10.5 kg/m<sup>2</sup>



### FOLI

#### Usable area:

2400x1160 mm

#### Gross panel size:

2500x1250 mm

#### Minimum radius approx:

≥ 230 mm

#### Mat. and thicknesses:

Raw MDF 8 mm, 5 kg/m<sup>2</sup>

Black MDF 8 mm, 6 kg/m<sup>2</sup>



### LINAR

#### Usable area:

2350x1200 mm

#### Gross panel size:

2500x1250 mm

#### Minimum radius approx:

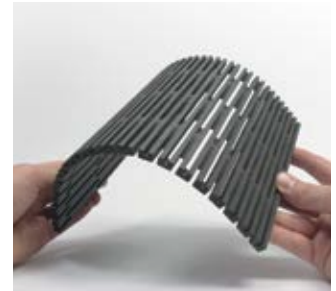
≥ 120 mm

#### Mat. and thicknesses:

Raw MDF 8 mm, 4 kg/m<sup>2</sup>

Black MDF 8 mm, 5 kg/m<sup>2</sup>

Beech Multilayer 9 mm, 4 kg/m<sup>2</sup>



### SONAR

#### Usable area:

2300x1200 mm

#### Gross panel size:

2500x1250 mm

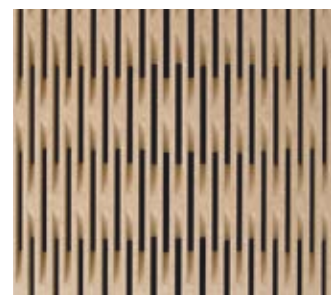
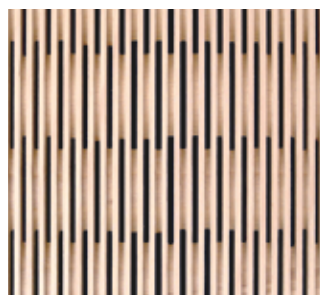
#### Minimum radius approx:

≥ 150 mm

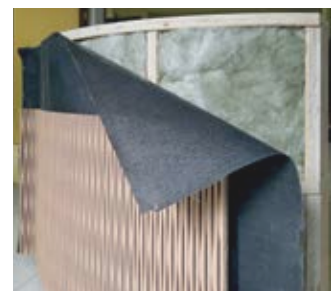
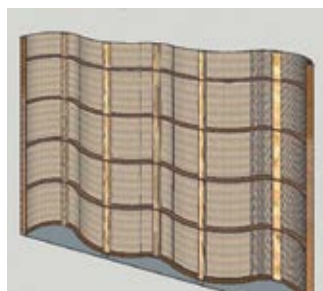
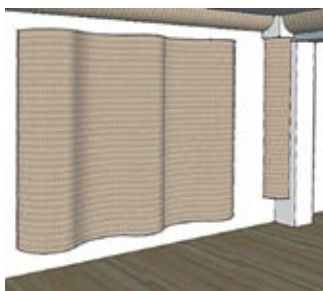
#### Mat. and thicknesses:

Raw MDF 8 mm, 4 kg/m<sup>2</sup>

Black MDF 8 mm, 5 kg/m<sup>2</sup>



## Assembly concept for curved panels



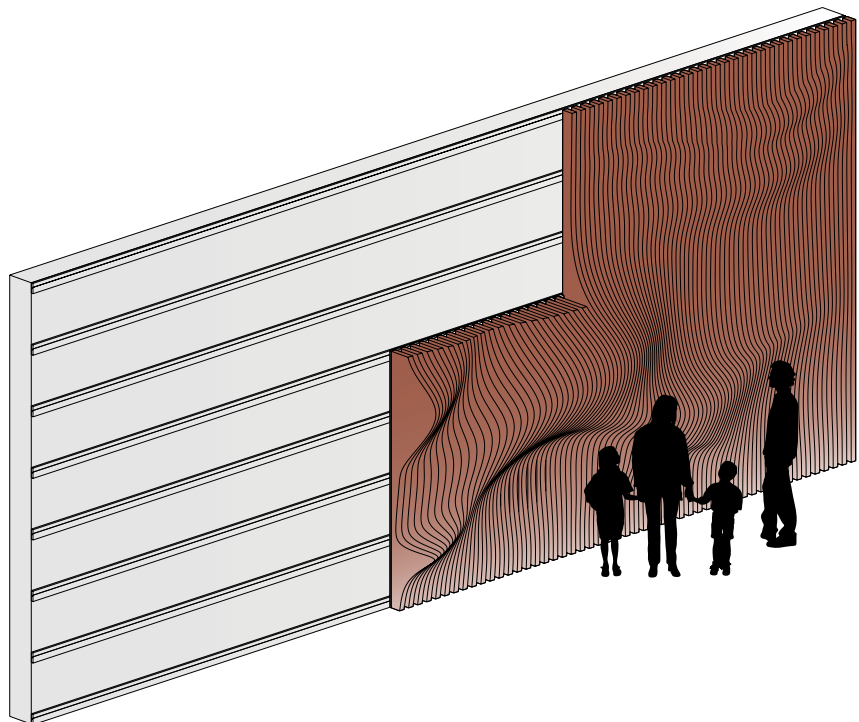
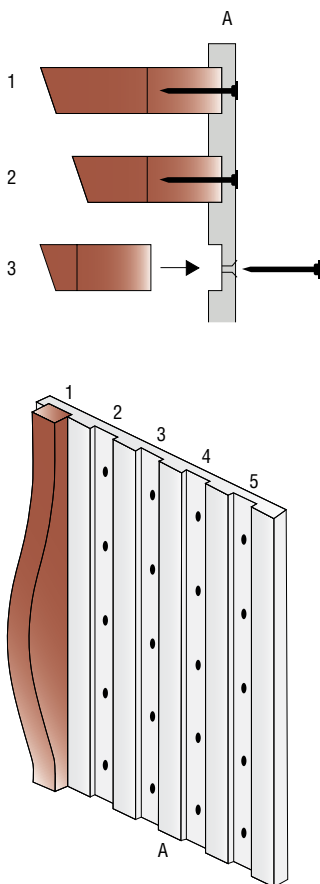
# Slatted walls 3D

We manufacture panels in different materials (natural wood, plywood, MDF, ...) and finishes, to decorate walls and ceilings. From a standard dimension of slats 40 mm width, 80 mm pitch, a variable depth from 130 mm to 800 mm and a maximum total thickness of 830 mm, we can adapt different designs to the requirements of any project. Panels and strips are delivered numbered to facilitate the assembly of every element to the correct position. Support panels are usually manufactured using black MDF and can also be delivered machined with holes or large grooves for a better acoustic performance of the room. Due to the important weight of these structures, which can be around  $200 \text{ kg/m}^2$ , it is very important to ensure their correct fixing to the wall.



## Assembly concept for Slatted walls 3D

For a greater ease in assembly, both the slats and the support panels are delivered perfectly identified. Once the slats on the panels are installed, sets can be installed on the walls. Prior to installation, it is very important to calculate the strength of the walls to be covered and to use the appropriate fixing system to support expected loads.



Difusion Momentum, **Victoriaville - Canada** | Bombardier, **Montréal - Canada** | Ministère de l'Agriculture, **Paris - France** | Sheikh Jaber Al Ahmad Cultural Centre, **Kuwait** | Michelin Campus RDI, **Ladoux - France** | École de danse des Mureaux, département 78, **France** | Banco de España, **Madrid - Spain** | Ministère de la Défense, **Paris - France** | University Mohamed VI, **Benguerir - Morocco** | Escola Mistral, **Barcelona - Spain** | Auditori Santa Clara, **Vic - Spain** | Confedilizia Italia, **Presidenza - Italy** | Selex Finmeccanica, **Roma - Italy** | Ristorante La Langosteria, **Milano - Italy** | Aule nuovo Polo Scolastico Balloi, **Cagliari - Italy** | Boutique Lacoste, **Barcelona - Spain** | Malta Parliament, **Malta** | Hong Kong University, **Hong Kong** | KSAUHS University, **Riyadh - Saudi Arabia** | ABBA Hotel, **Berlin - Germany** | Google offices, **Madrid - Spain** | Hall Hotel Rey Juan Carlos I, **Barcelona - Spain** | Sala vídeo conferencia BBVA, **Madrid - Spain** | Sala vídeo conferencia BBVA, **Ciudad de México - México** | Sede central ENAGAS, **Madrid - Spain** | Sala control aéreo, **Roma - Italia** | Edificio Residencial Universidad, **Vic - Spain** | Hotel Alhambra, **Sta. Susanna - Spain** | Oficinas Idiada Applus, **Sta. Oliva - Spain** | Oficinas Inditex, **A Coruña - Spain** | Hall oficinas Pierre Fabre, **Barcelona - Spain** | Teatro colegio Lourdes, **Valladolid - Spain** | Hotel Royal Tulip, **Tánger - Marruecos** | Centro convenciones, **Akure - Nigeria** | Telefónica auditorium, **Barcelona - Spain** | Boutiques Sabon, **France** | Phosphates du Maroc auditorium, **Morocco** | Louis Vuitton shop, **Barcelona - Spain** | Las Llamas auditorium, **Santander - Spain** | Teresa Pàmies Library, **Barcelona - Spain** | El Ejido auditorium, **Almería - Spain** | Sevilla Convention center, **Sevilla - Spain** | Hotel Meliá, **Torremolinos - Spain** | Banco Sabadell main offices, **St. Cugat del Vallès - Spain** | Hesperia Hotel, **L'Hospitalet del Llobregat - Spain** | Barcelona aerial control, **Barcelona - Spain** | California cinema, **Madrid - Spain** | Estadio Santiago Bernabéu, **Madrid - Spain** | Sala de prensa Futbol Club Barcelona, **Barcelona - Spain** | Auditorio Hotel Blancafort, **La Garriga, Barcelona - Spain** | Universitat Jaume Primer, **Castelló - Spain** | Chilena Consolidada - Grupo Zurich, **Santiago - Chile** | Aerogare do Aeroporto Internacional, **Gabão - Portugal** | Centro Materno Infantil do Norte, **Porto - Portugal** | Convention Center, **Ondo State - Nigeria** | Ministère de l'agriculture, **Paris - France** | Lar de Lordemão, **Portugal** | Lar Residencial "O Telhadinho", **Portugal** | Centro Reabilitação do Norte, **Portugal** | Centro Saúde de Arraiolos, **Portugal** | Cartier shop, **Barcelona - Spain** | Middle East Airlines - Training Center, **Beirut - Lebanon** | Booz Allen Hamilton, **Beirut - Lebanon** | Université Saint Esprit Kaslik Medical Center, **Byblos - Lebanon** | Estudios Tele Madrid, **Madrid - España** | Bolsa de Madrid, **Madrid - España** | Castell de Peratallada, **Girona - España** | Castell de Vallmoll, **Tarragona - España** | Arròs i Peix, **Barcelona - España** | Arròs i Peix, **Platja d'Aro - España** | Oficinas Gas Natural, **Barcelona - España** | Oficinas Gas Natural, **Madrid - España** | Fachada HPL Restaurante Tagliatella, **Terrassa, Barcelona - España**





Pol. Ind. Mas les Vinyes  
C/ Llevant, 2  
08570 Torelló (Barcelona)  
T (+34) 93 859 08 38  
comercial@decustik.com

[www.decustik.com](http://www.decustik.com)

Decustik is a registered trademark of Mecanitzats de la fusta Kim, S.L. Due to the high customization of our products the information described in this documentation may suffer variations.

DECORATIVE PANELS DECUSTIK REV  
OCT 2018 / UK